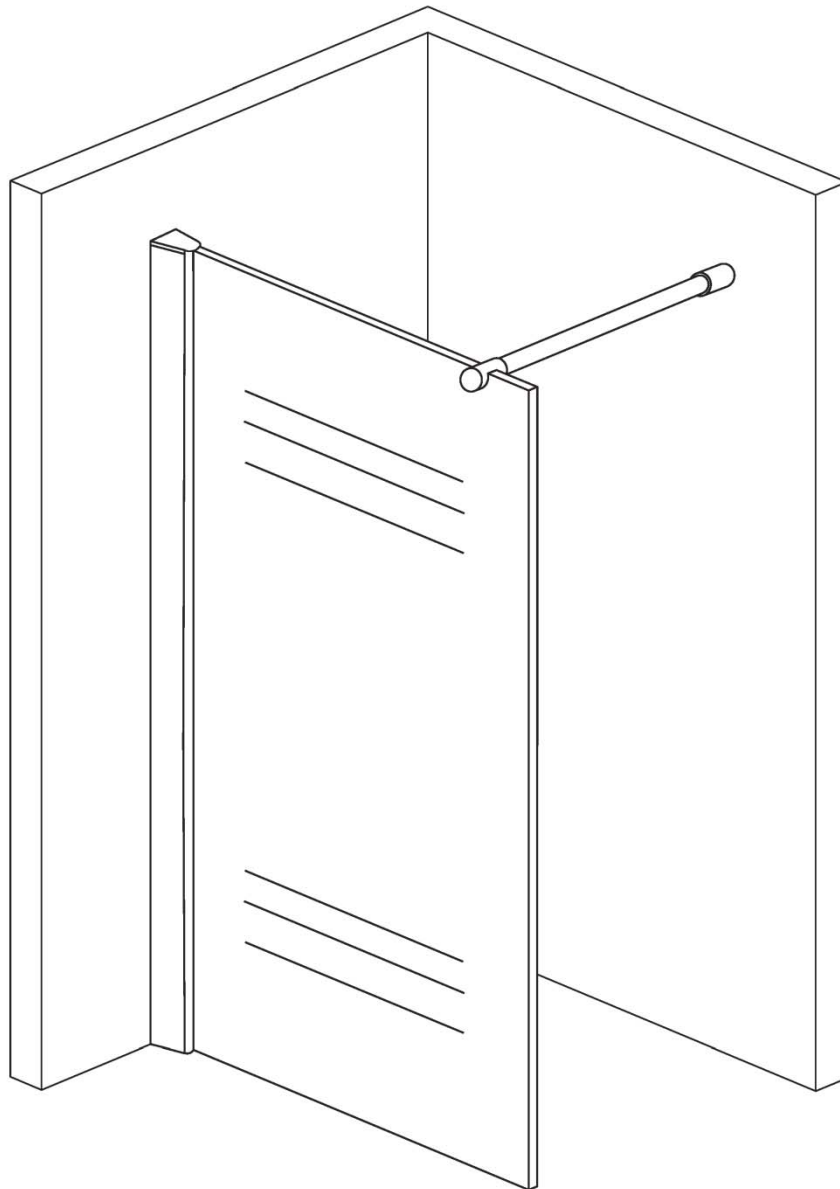


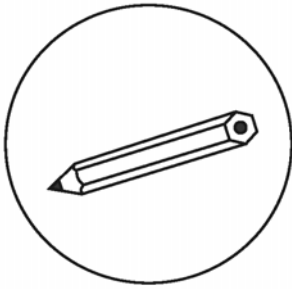
## Montageanleitung Duschwand



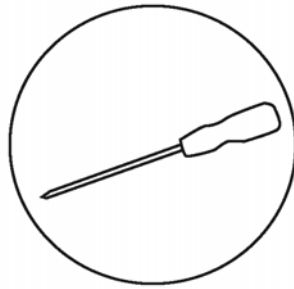
3647/3649/3650

**RoHS** **CE** ISO9001:2000

## Benötigtes Werkzeug



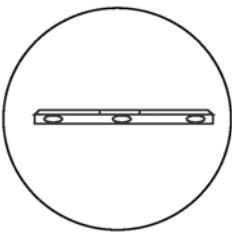
Bleistift



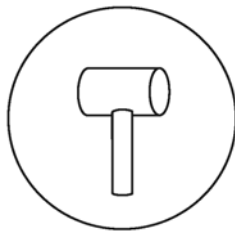
Kreuz-Schraubendreher



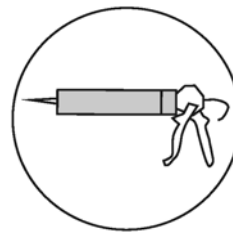
Bohrer



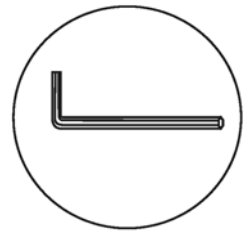
Wasserwaage



Gummi-Hammer

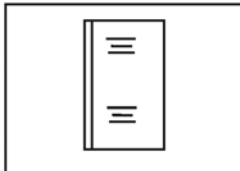


Silikon

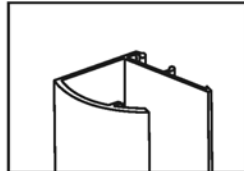


Inbusschlüssel

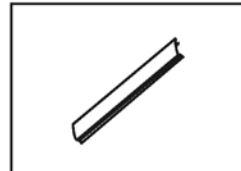
## Teileliste



Glass



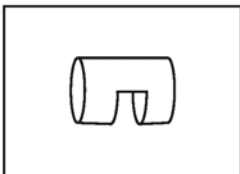
Wall profile



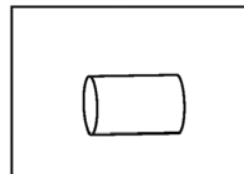
Side cover



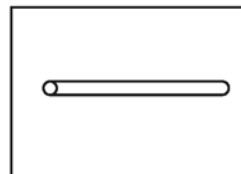
Expand tube



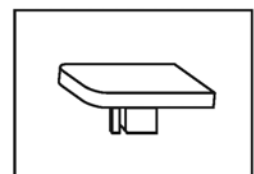
PJ-4141



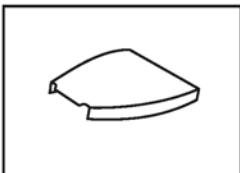
PJ-4451



LG-2004



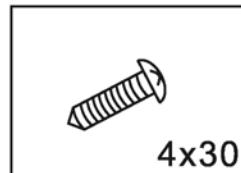
PJ-4509



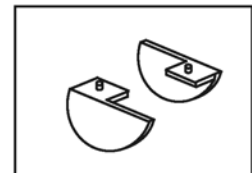
PJ-4664



4X14  
Screw

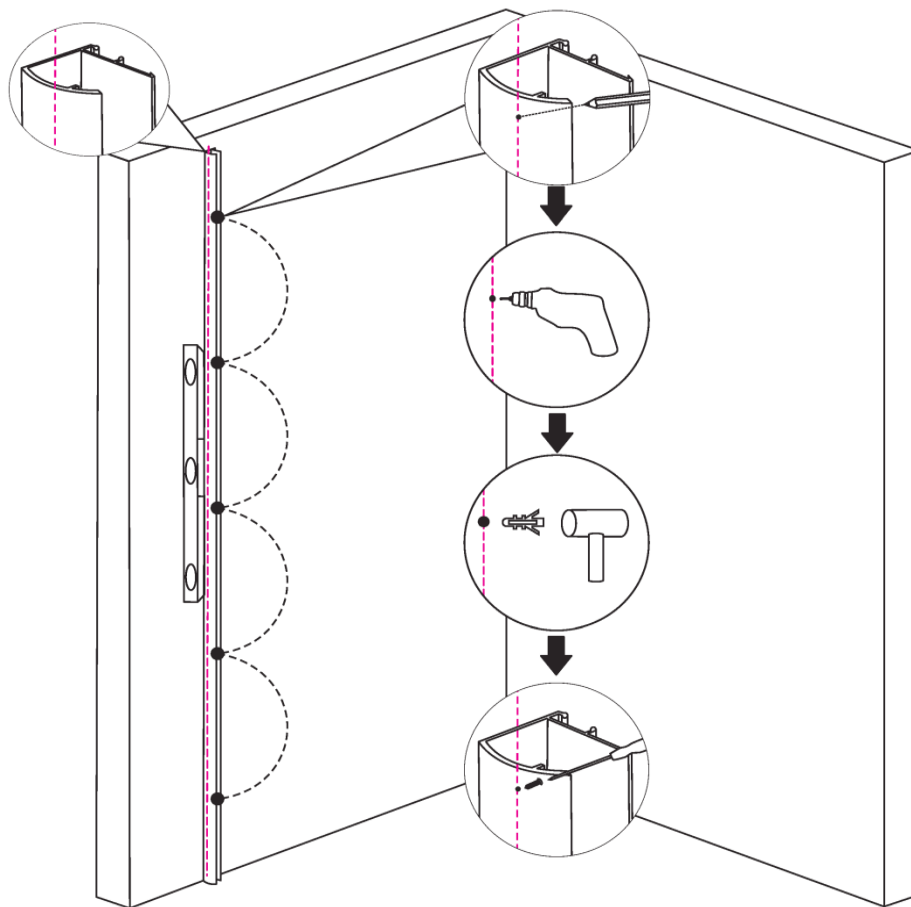
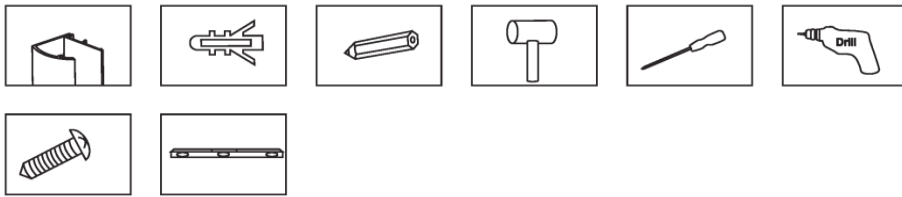


4x30  
Screw

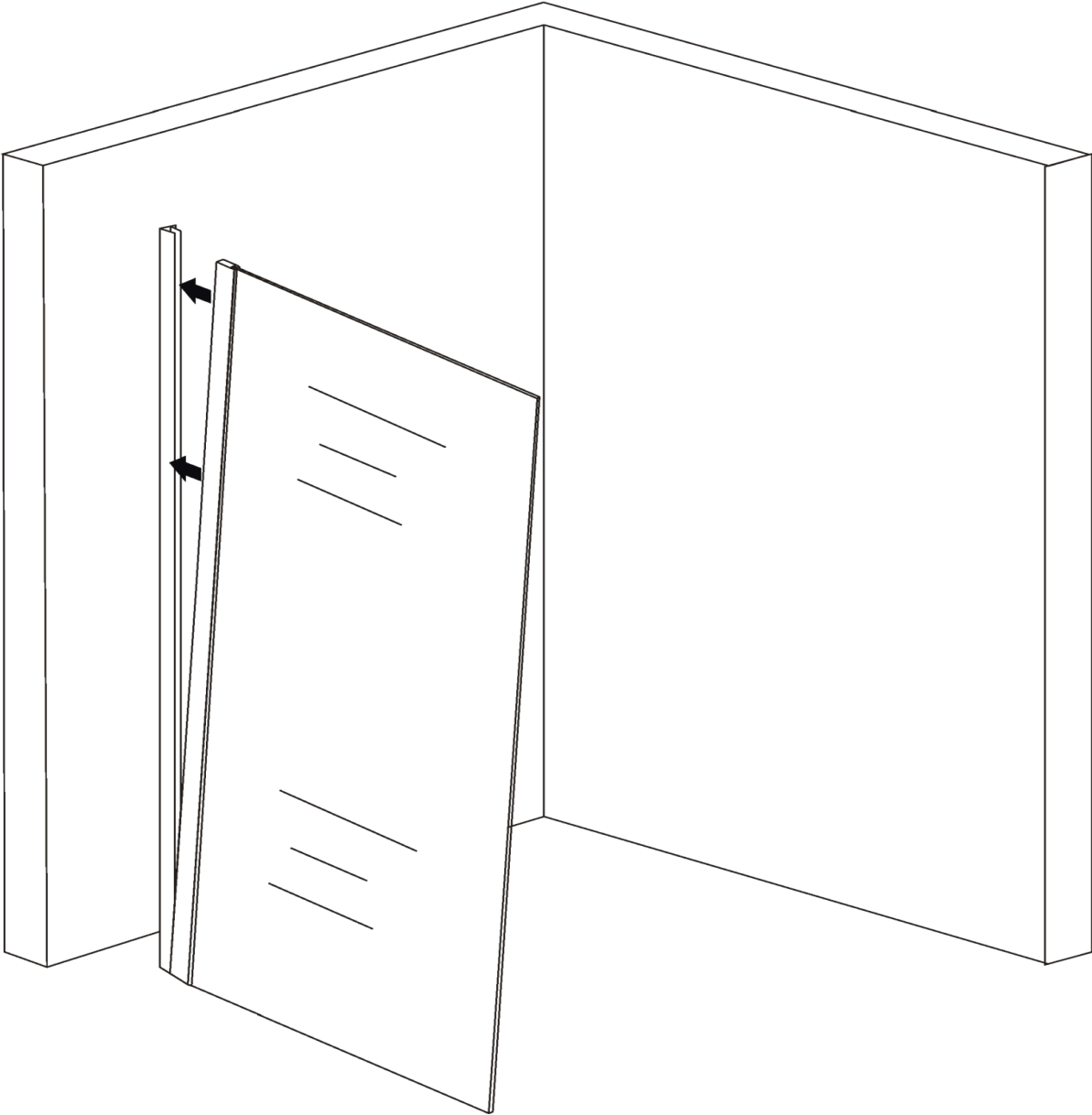
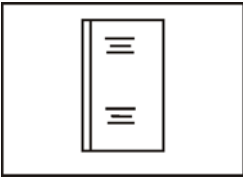


PJ-3008

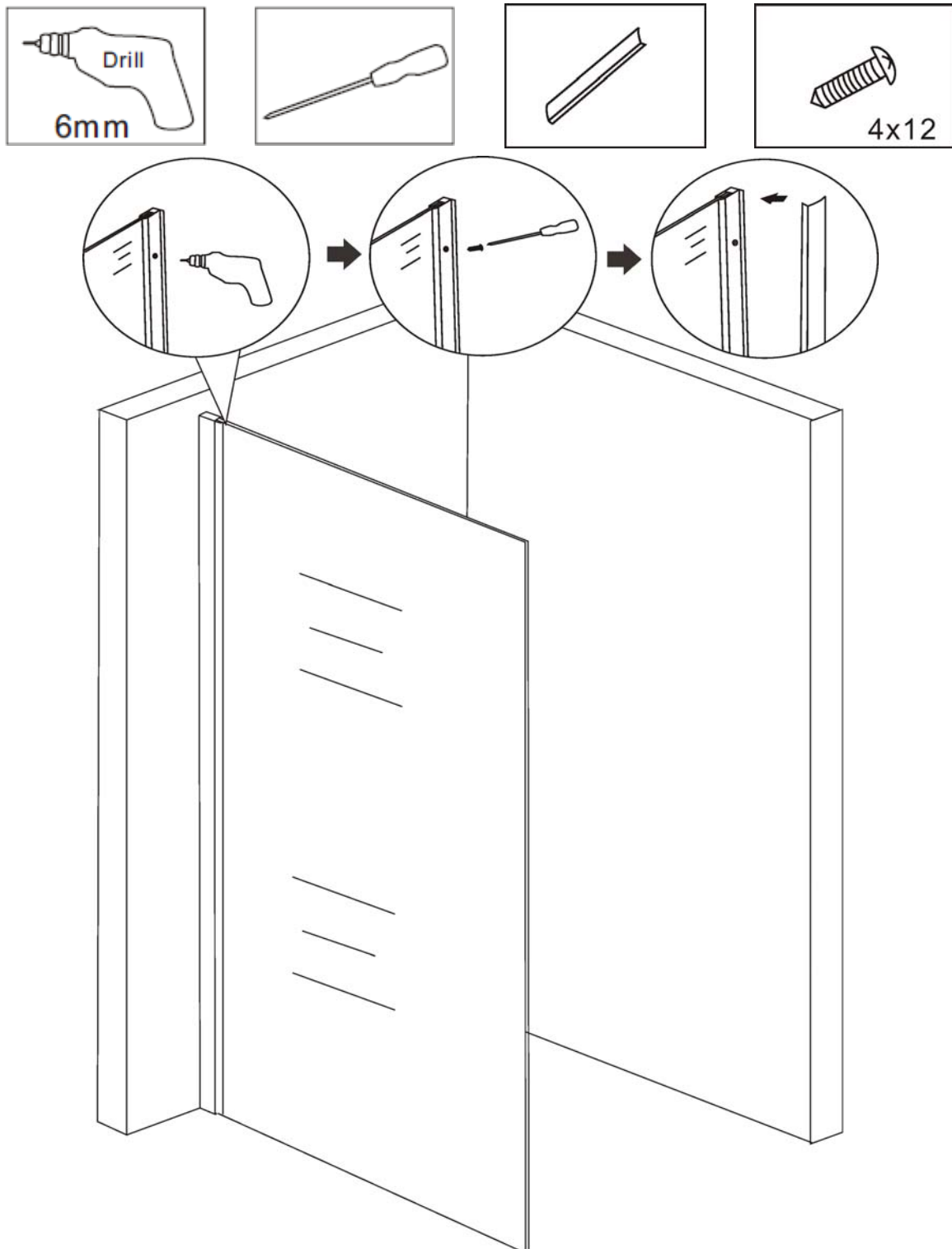
1. Stellen Sie das Wandprofil vertikal auf, nehmen Sie eine Wasserwaage zur Hilfe
2. Markieren Sie die Bohr-Löcher
3. Bohren Sie an der Markierung und setzen Sie die Dübel in die Wand
4. Schrauben Sie das Profil an die Wand



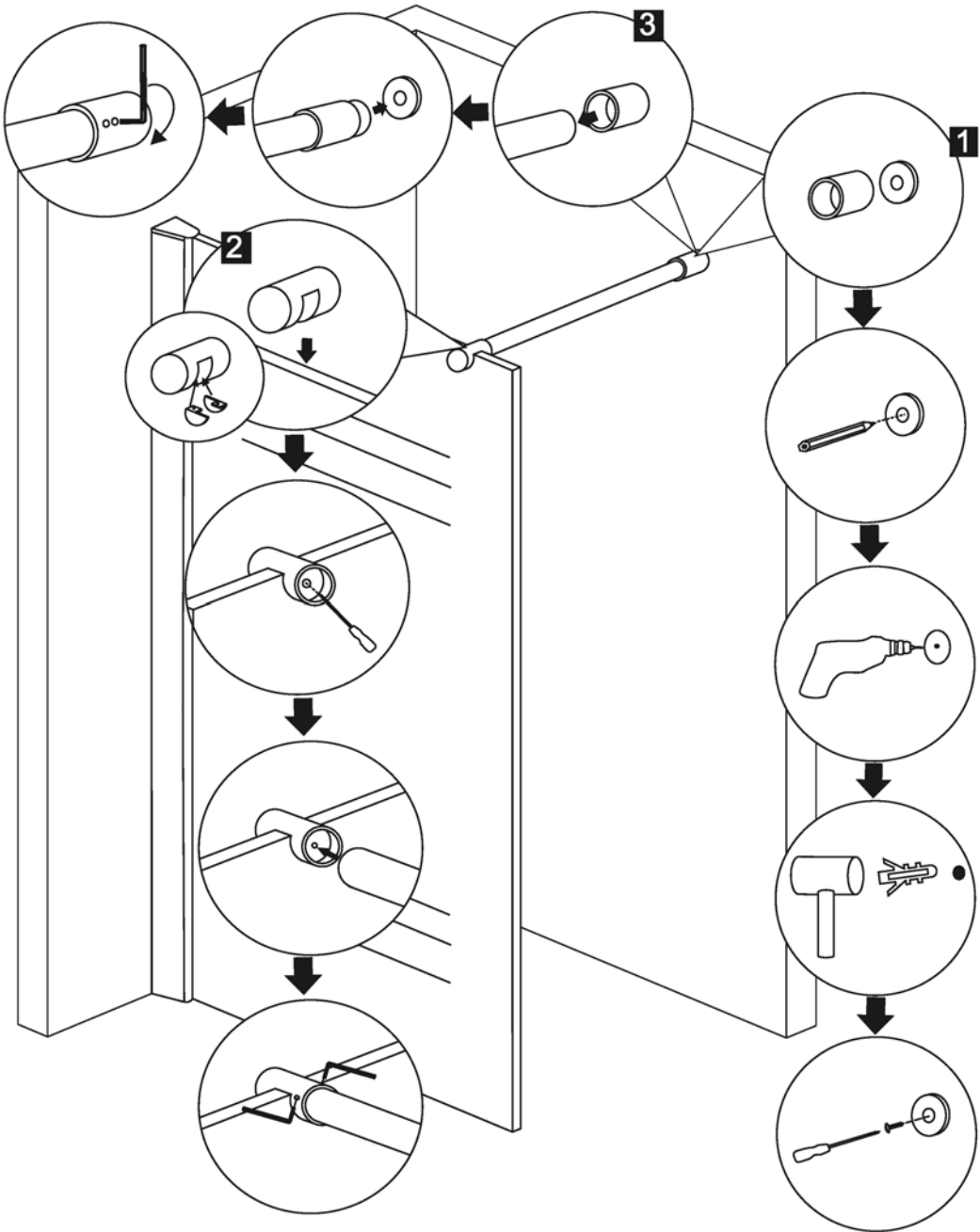
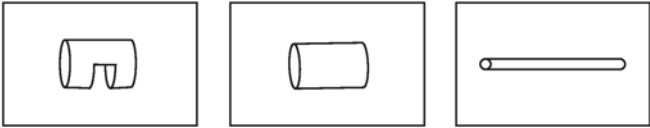
Führen Sie vorsichtig die Duschwand in das Wandprofil (lassen Sie den Kantenschutz am Glas)



1. Bohren Sie an den vorgesehenen Stellen durch das Wandprofil und fixieren Sie die Duschwand mittels der beigefügten Schrauben
2. Bringen Sie anschließend die Abdeckleiste zwecks Verdeckung der Verschraubung an, diese ist ein zu klinken



Installieren Sie die Stabilisationsstange wie abgebildet



Bringen Sie die obere Profilabdeckung an und versiegeln Sie die Duschwand am Boden von innen & außen mittels Silikon

