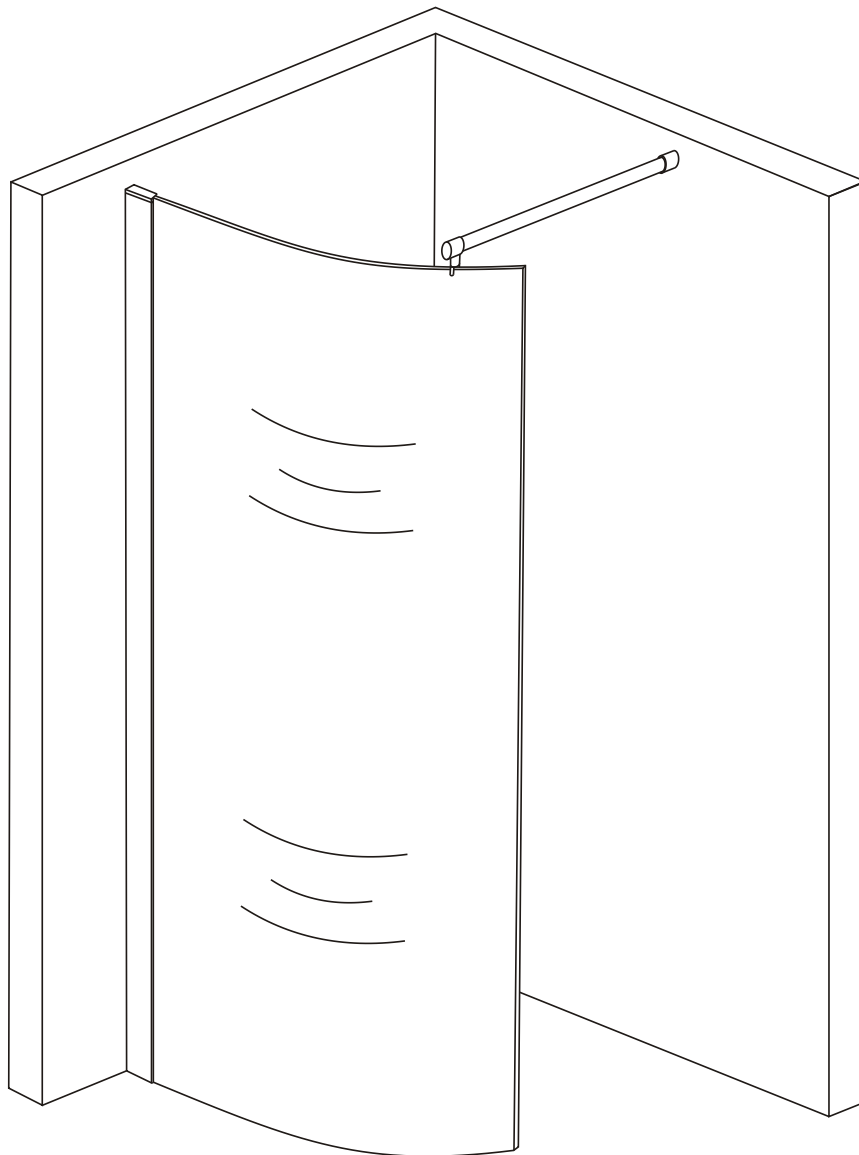


Montageanleitung für Walk In-Duschwand

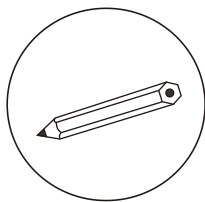
# INSTALLATION MANUAL



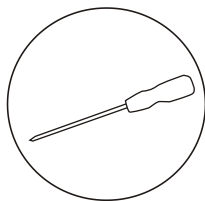
3542

*RoHS* **CE** ISO9001:2000

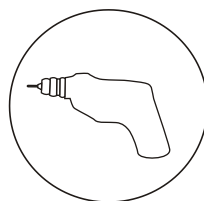
## Benötigtes Werkzeug



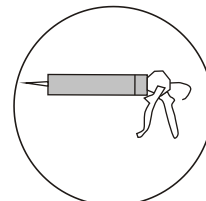
**Bleistift**



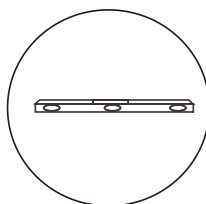
**Schraubendreher(Kreuz)**



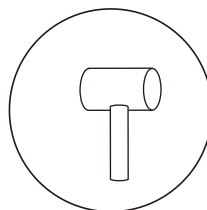
**Bohrmaschine**



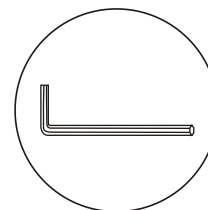
**Silikongel**



**Wasserwaage**

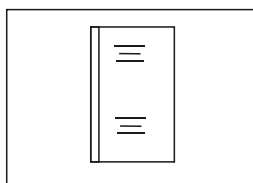


**Gummihammer**

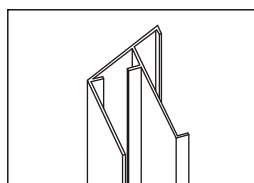


**Imbusschlüssel**

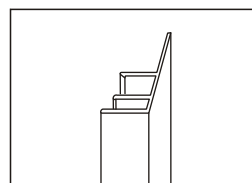
## Teileliste



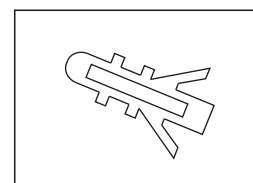
**Glaswand**



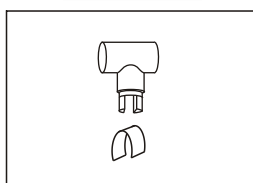
**Wand U-Profil**



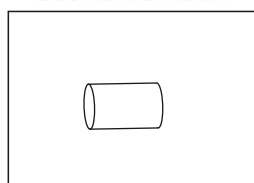
**Profil-Abdeckung**



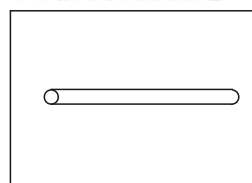
**Wand-Dübel**



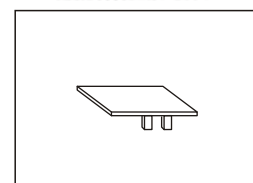
**PJ-4416**



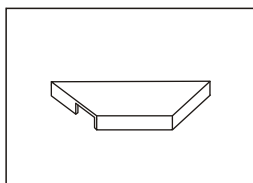
**PJ-4451**



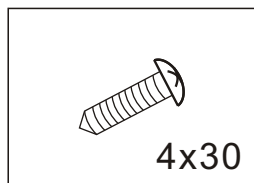
**LG-2004**



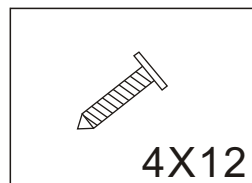
**PJ-4508**



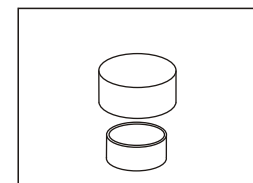
**PJ-4512**



**Wand-Schraube**

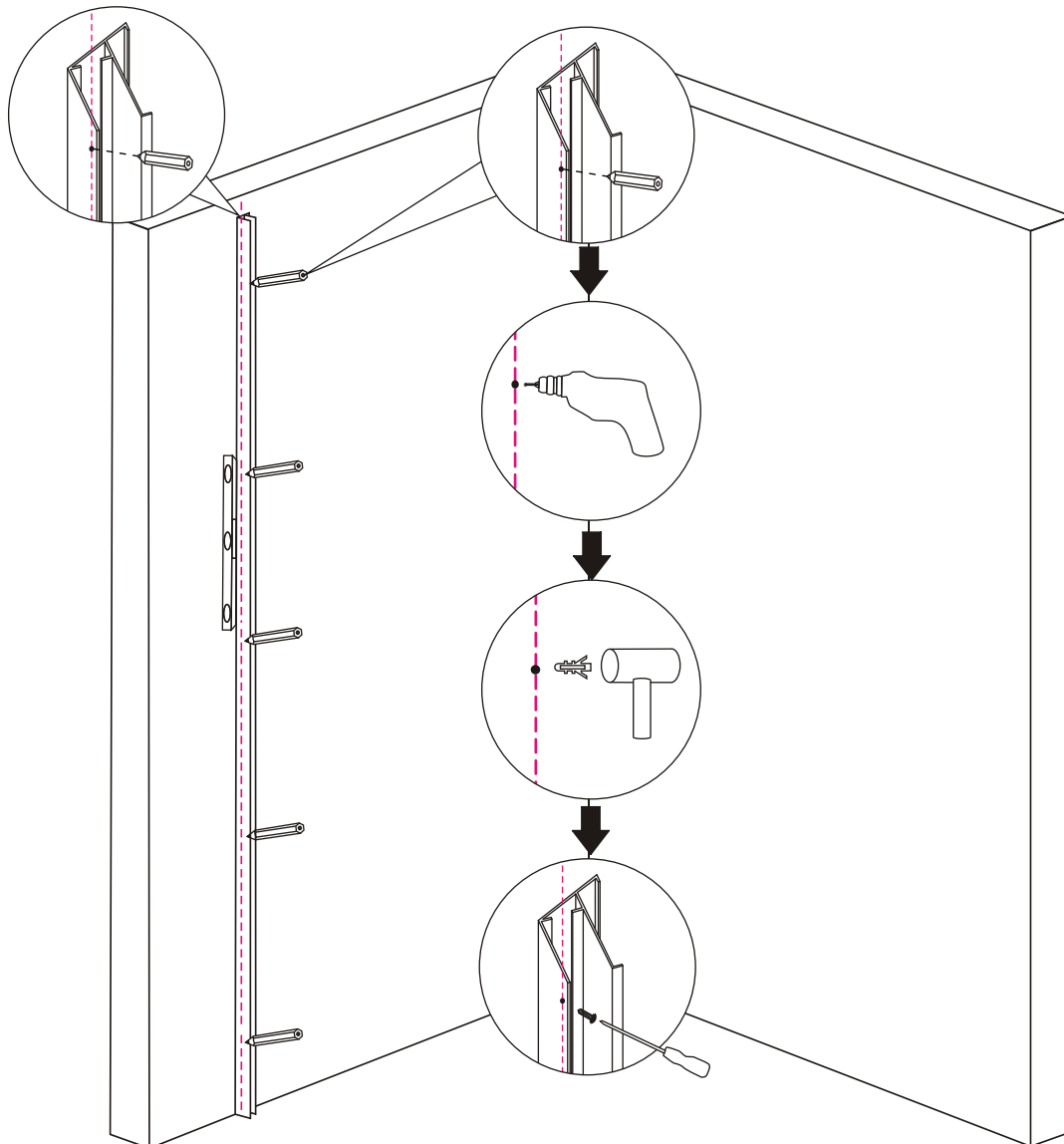
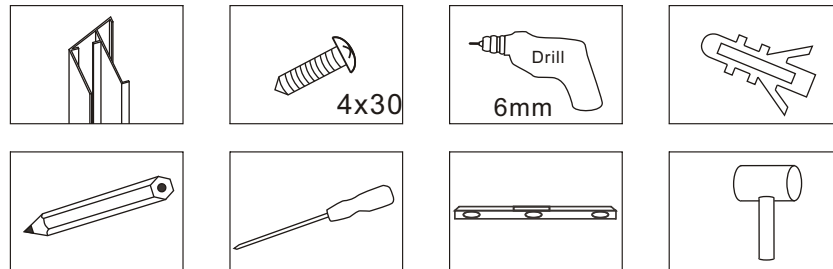


**Profil-Schraube**

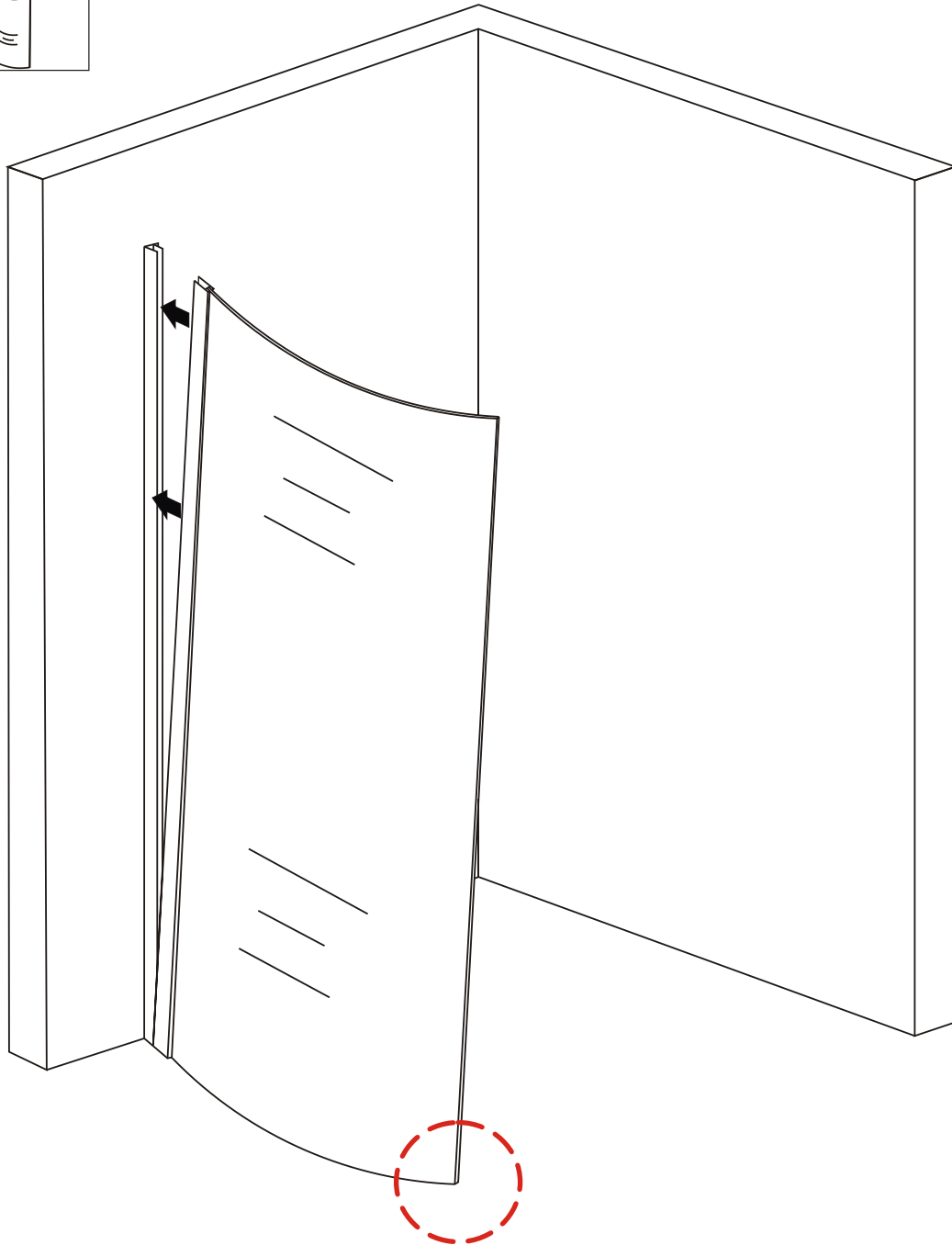
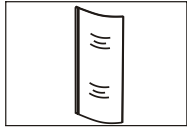


**PJ-4565/  
PJ-4565**

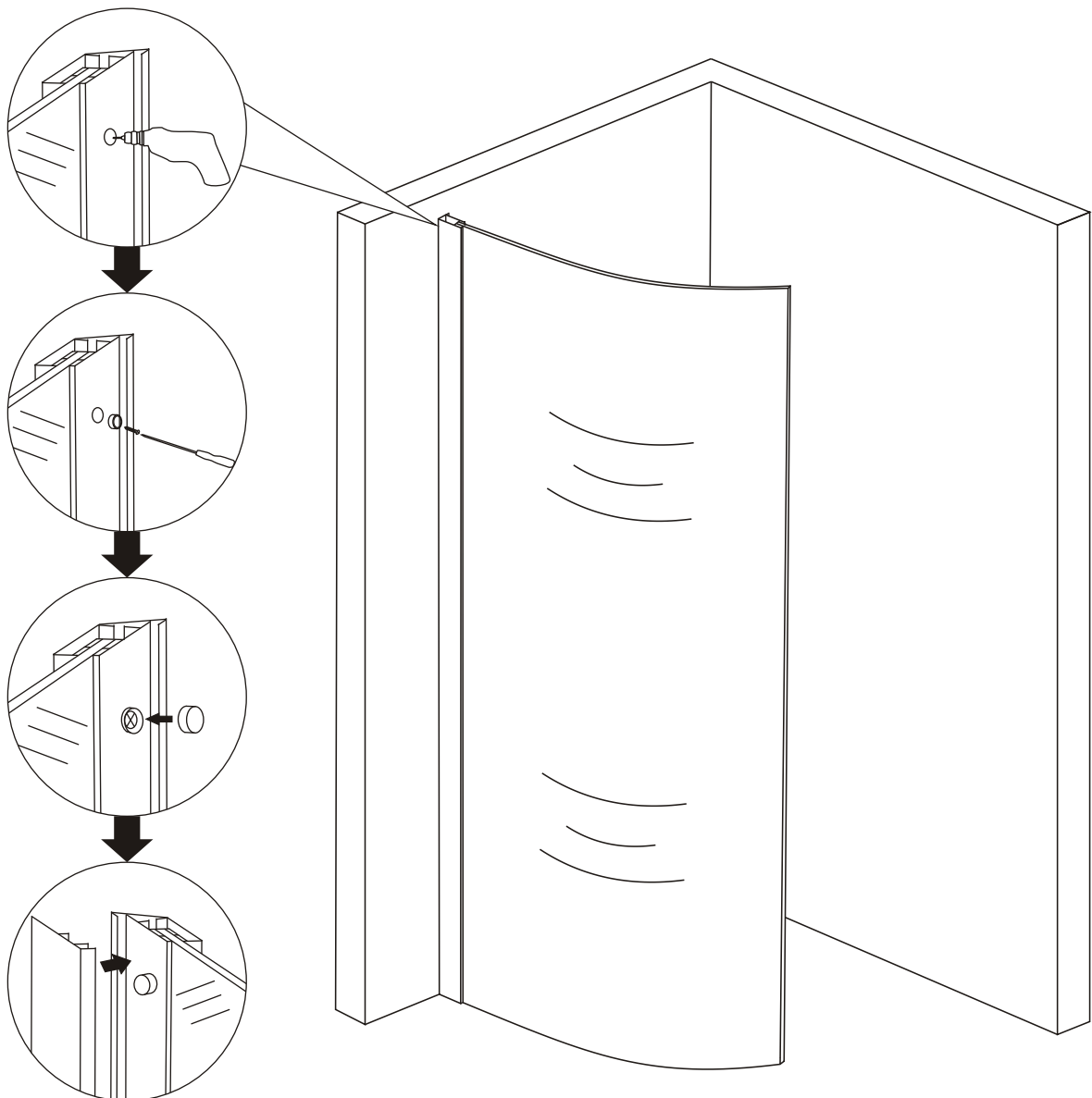
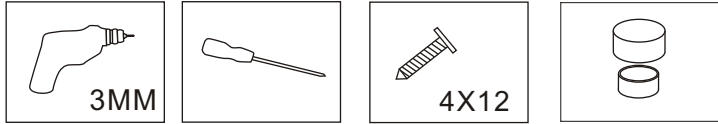
1. Stellen Sie das Wandprofil vertikal auf, nehmen Sie eine Wasserwaage zur Hilfe
2. Markieren Sie die Bohr-Löcher
3. Bohren Sie an der Markierung und setzen Sie die Dübel in die Wand
4. Schrauben Sie das Profil an die Wand



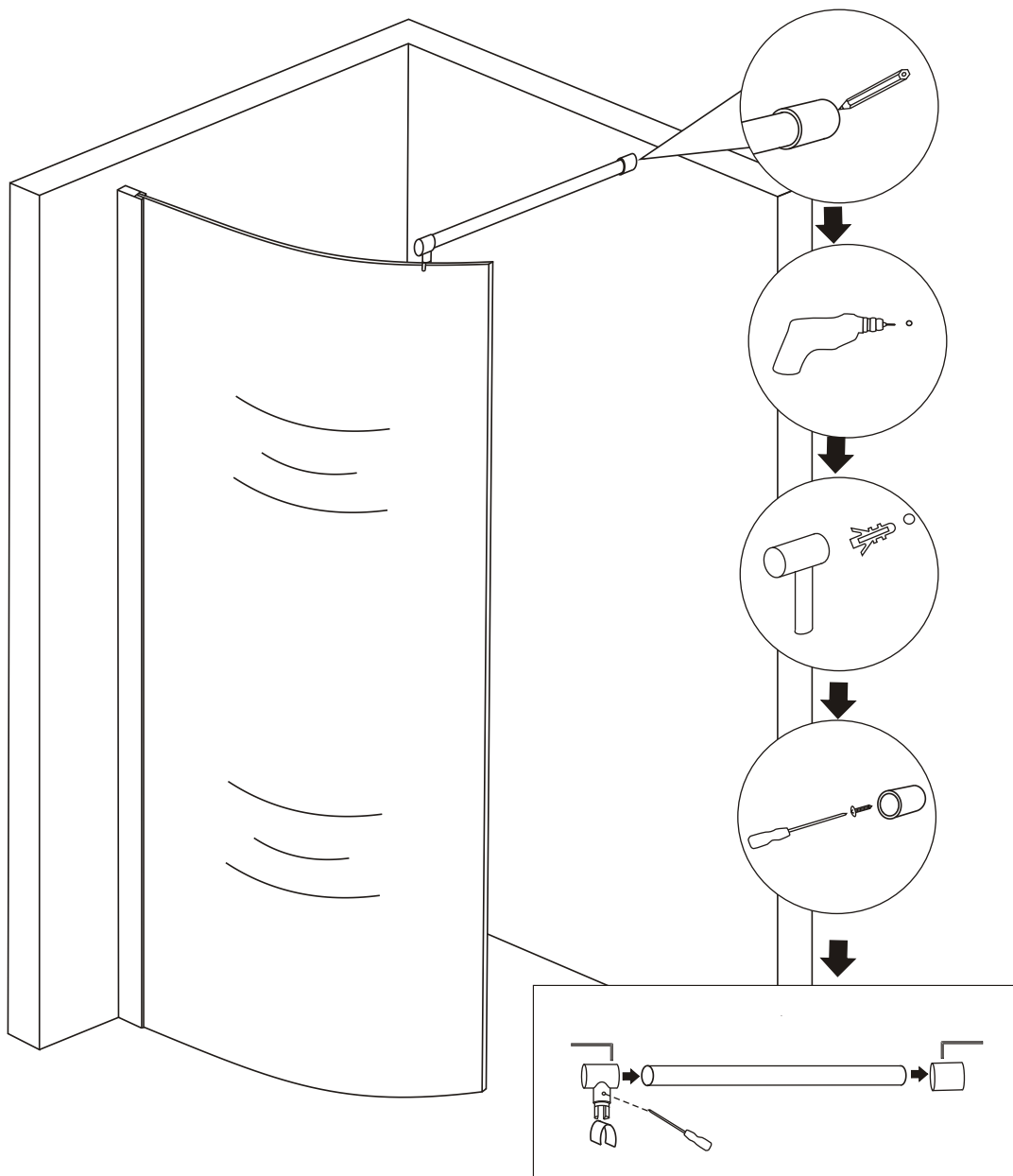
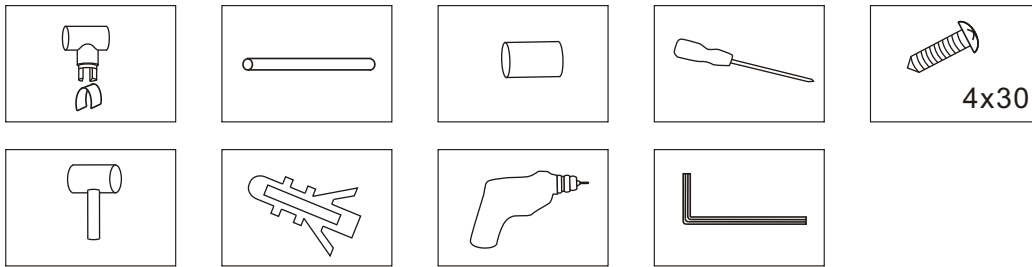
Führen Sie vorsichtig die Duschwand in das Wandprofil (lassen Sie den Kantenschutz am Glas)



1. Bohren Sie an den vorgesehenen Stellen durch das Wandprofil und fixieren Sie die Duschwand mittels der beigefügten Schrauben
2. Bringen Sie anschließend die Abdeckleiste zwecks Verdeckung der Verschraubung an, diese ist ein zu klinken



1. Platzieren Sie die Stabilisationsstange zwischen Dusch- und Hinterwand
2. Markieren Sie die Bohrlöcher
3. Bohren Sie an der Markierung und setzen Sie die Dübel
4. Installieren Sie die Stabilisationsstangen wie abgebildet



Bringen Sie die obere Profilabdeckung an und versiegeln Sie die Duschwand von innen & außen mittels Silikon

